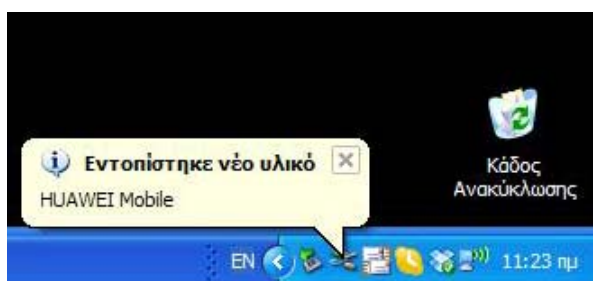




Installing Mobile Partner

How to install Mobile Partner to a new computer. **Before try everything read Quick user guide.**

1. Insert Huawei Usb Modem to a USB slot of your computer.
2. A notification will pop up



3. Wait one minute and the Mobile Partner setup wizard will start automatically



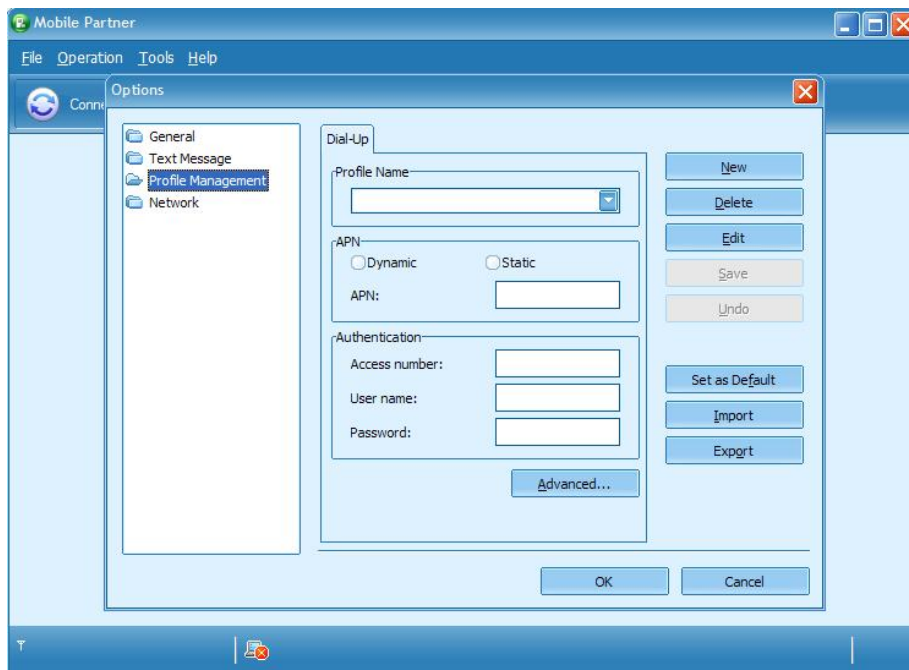
4. Follow the steps to finalize the installation. **If Setup wizard don't start , navigate to My computer folder to Mobile Partner icon and start installation manually from there.**



Mobile Partner Settings

How to configure a new Huawei Mobile Partner profile to work with a mobile network.

1. Open mobile partner
2. Go to Tools
3. Options
4. Choose Profile Management



5. Click new
6. Set profile name Planetsim and APN static
7. At APN add : send.ee
8. At user name add your number as 3725XXXXXXX
9. Leave password black and click Ok
10. Now you will redirect to start page of Mobile partner choose Planetsim profile from list and click Connect