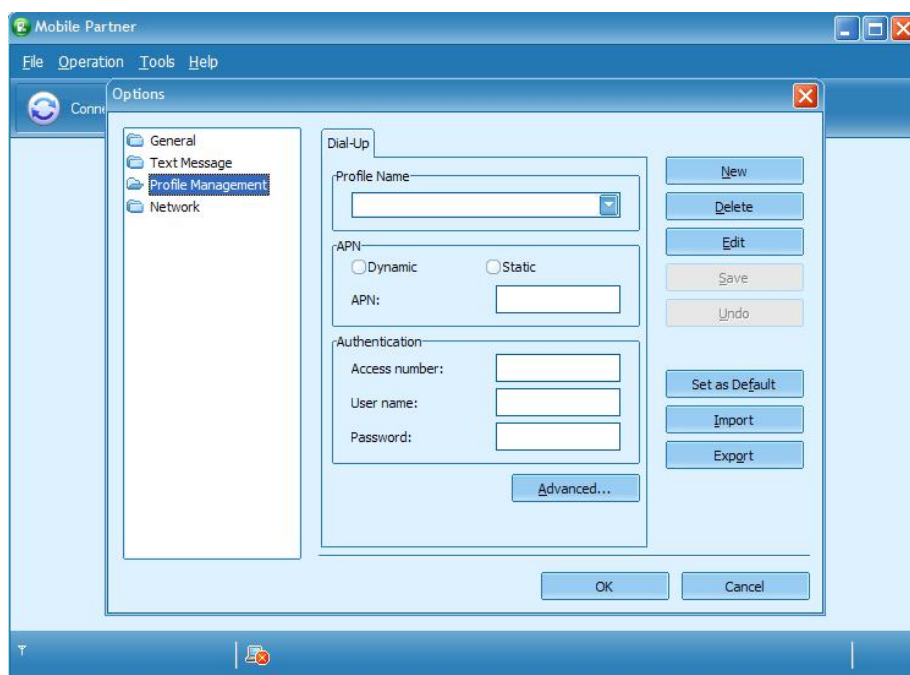


Planetsim GPRS internet connection setup for Personal Computers

How to configure a new Huawei Mobile Partner profile to work with a mobile network.

1. Open mobile partner
2. Go to Tools
3. Options
4. Choose Profile Management



5. Click new
6. Set profile name Planetsim and APN static
7. At APN add : send.ee (for PlanetSim Data apn:apn)
8. At user name add your number as 3725XXXXXXX (for PlanetSim Data username : leave empty)
9. Leave password empty and click Ok
10. Now you will redirect to start page of Mobile partner choose Planetsim profile from list and click Connect